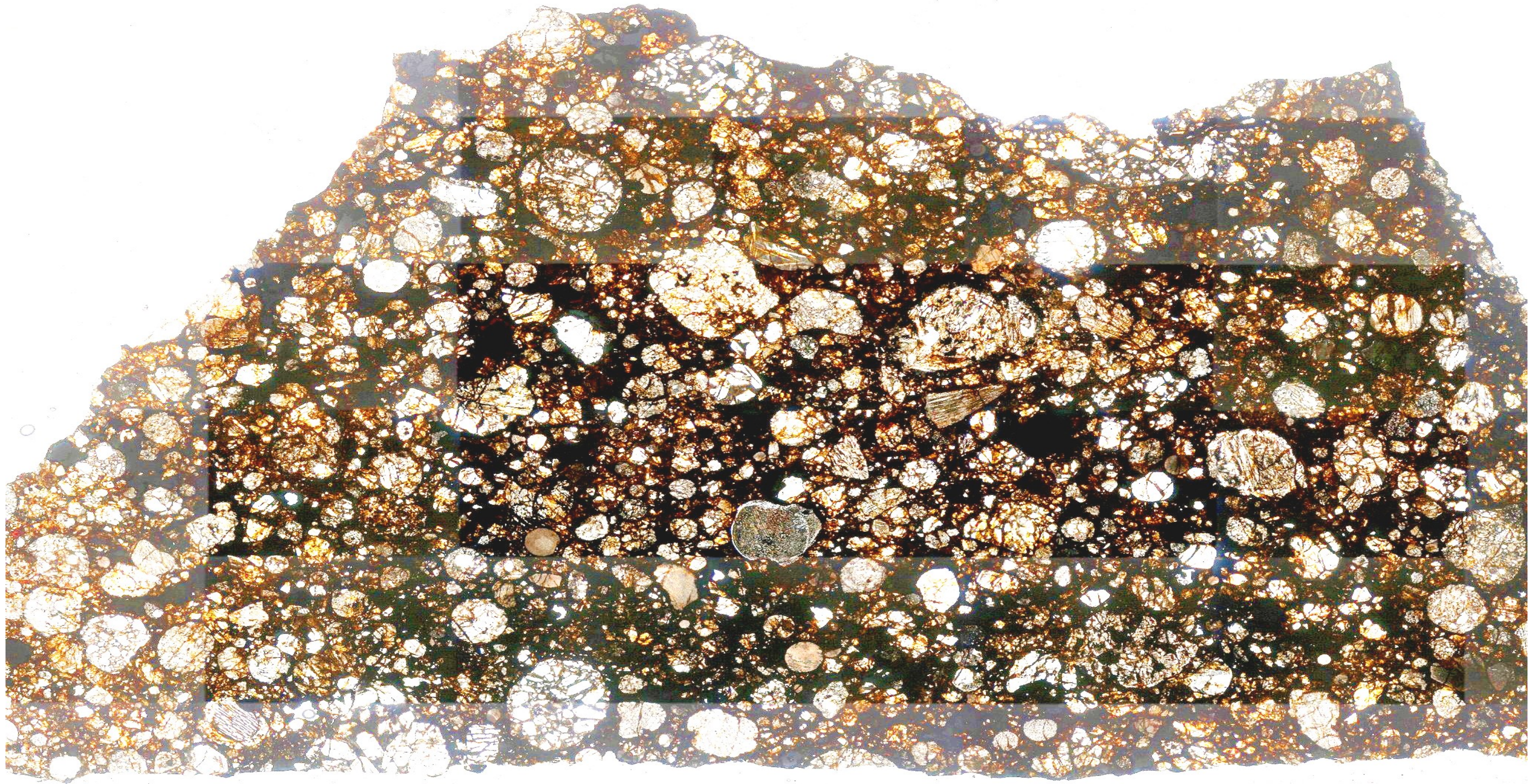


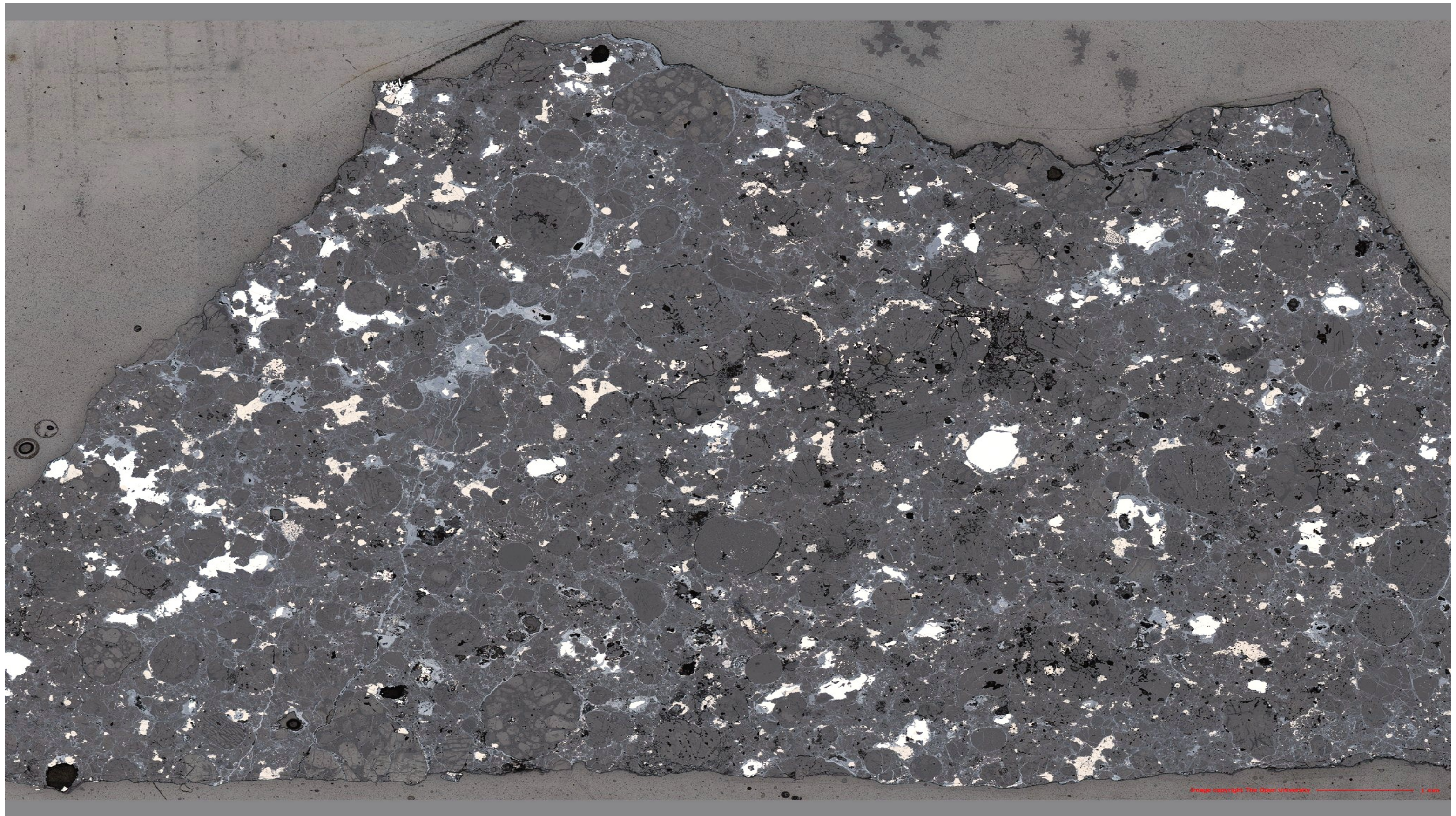
**Calcium Aluminium rich Inclusions (CAIs)** are light blue-grey in colour and have a fluffy texture. [Credit clockwise: AMNH, NHM, meteorite-times.com]





Round spheres of silicate minerals, **chondrules**, are embedded in a dark fine grained **matrix** [credit: The Open University]





Blebs of **Fe-Ni metal** are embedded in the matrix. [credit: The Open University]